

REVISIONS

DATE BY

Project#: SR-204 (SP-1596)

County: 057

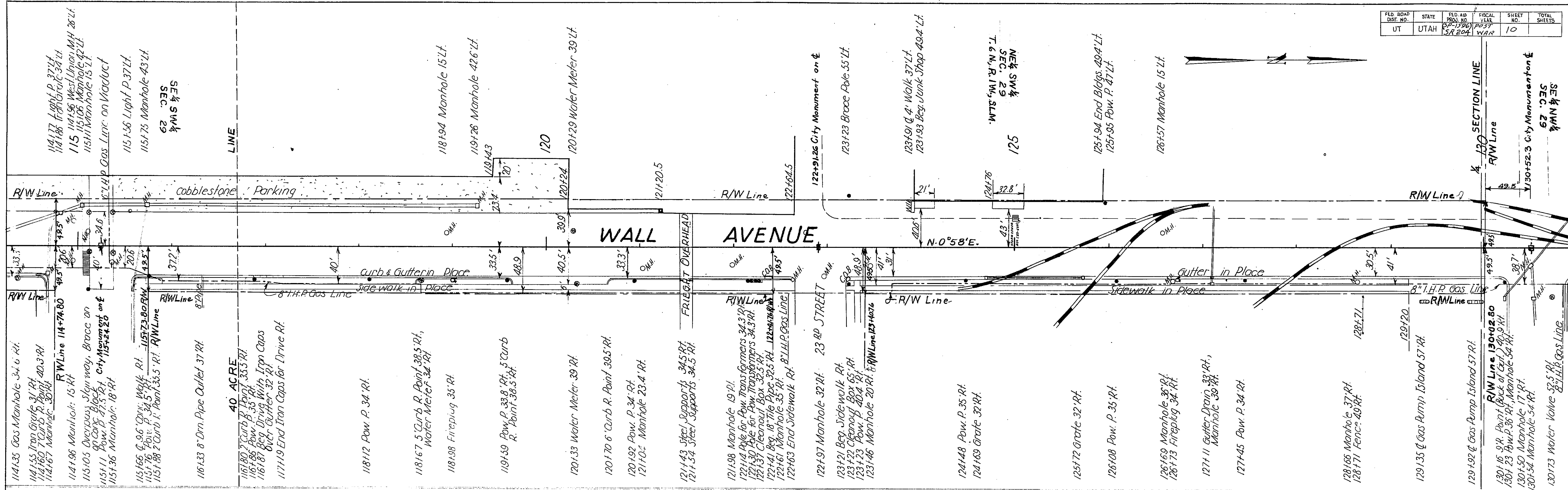
Route: 204

Reg. Rec. Post:

End Rec. Post:

Sheet#: 70

Sheet Type: 09



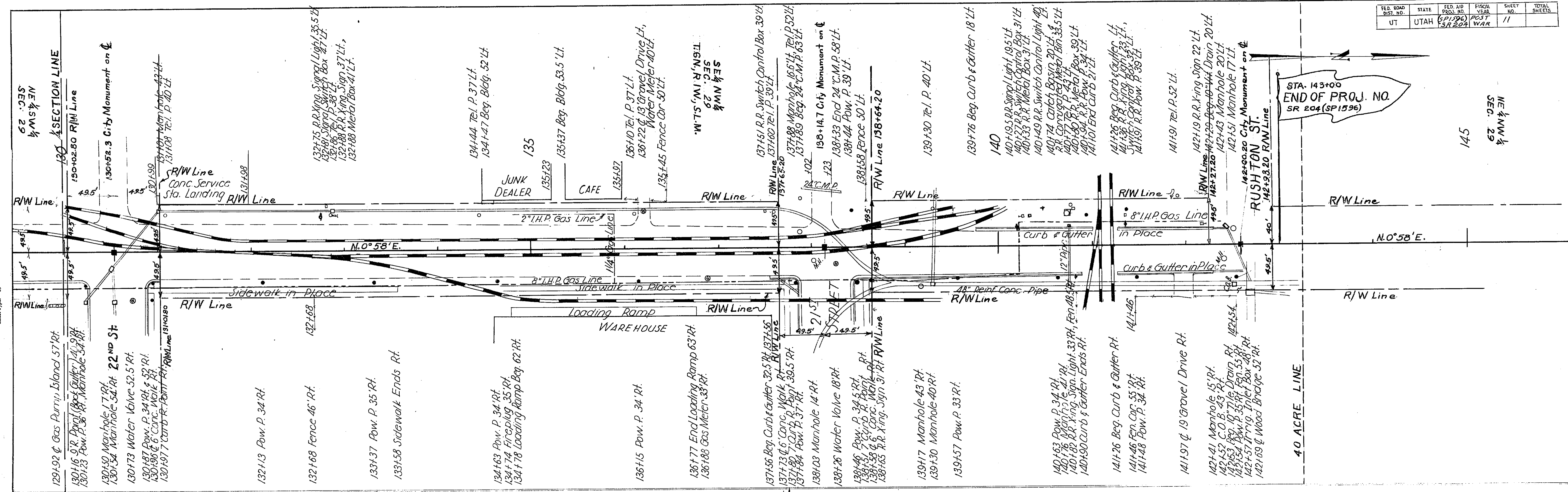
| FED. ROAD DIST. NO. | STATE | FED. AID PROJ. NO. | FISCAL YEAR | SHEET NO. | TOTAL SHEETS |
|---------------------|-------|--------------------|-------------|-----------|--------------|
| UT | UTAH | SP-1596 SR 204 | 2027 | 10 | |



- 114135 Gas Manhole 34.6 Rt.
- 114153 Iron Grate 31 Rt.
- 114160 7' Curb P. Point 20.3 Rt.
- 114167 Manhole 30 Rt.
- R/W Line 114+74.80
- 114196 Manhole 15 Rt.
- 115105 Overpass Slan way, Brace on 90 Cons. Block City Monument on E
- 115111 Pow. P. 47.5 Rt.
- 115136 Manhole 18 Rt.
- R/W Line 115+73.80
- 115166 9.96' Con. Walk Rt.
- 115176 Pow. P. 34.5 Rt.
- 115188 2' Curb P. Point 33.5 Rt.
- R/W Line 115+24.20
- 116133 8" Dm. Pipe Outlet 37 Rt.
- 40 ACRE
- 116180 2' Curb P. Point 33.5 Rt.
- 116186 Pow. P. 33 Rt.
- 116187 Beg. Drive With Iron Caps Over Gutter 32 Rt.
- 117119 End Iron Caps for Drive Rt.
- 118112 Pow. P. 34 Rt.
- 118198 Fireplug 35 Rt.
- 118167 5' Curb R. Point 38.5 Rt.
- Water Meter 34 Rt.
- 118194 Manhole 15 Lt.
- 119126 Manhole 42.6 Lt.
- 119143
- 119159 Pow. P. 33.8 Rt.
- 5' Curb R. Point 38.5 Rt.
- 120133 Water Meter 39 Rt.
- 120170 6' Curb R. Point 39.5 Rt.
- 120192 Pow. P. 34 Rt.
- 121104 Manhole 23.4 Rt.
- 121143 Steel Supports 34.5 Rt.
- 121154 Steel Supports 34.5 Rt.
- 121198 Manhole 19 Rt.
- 122114 Pole for Pow. Transformers 34.3 Rt.
- 122130 Pole for Pow. Transformers 34.3 Rt.
- 122137 Cleanout Box 32.5 Rt.
- 122141 Beg. 18" Tile Pipe 32.5 Rt.
- 122161 Manhole 35 Rt.
- 122163 End Sidewalk Rt.
- 8" H.P. Gas Line
- 122197 Manhole 32 Rt.
- 23 RD STREET
- 123121 Beg. Sidewalk Rt.
- 123122 Cleanout Box 65 Rt.
- 123123 Pow. P. 40.4 Rt.
- 123146 Manhole 20 Rt.
- 124148 Pow. P. 35 Rt.
- 124169 Grate 32 Rt.
- 125172 Grate 32 Rt.
- 126108 Pow. P. 35 Rt.
- 126169 Manhole 36 Rt.
- 126173 Fireplug 34 Rt.
- 127111 Gutter Drain 33 Rt.
- Manhole 39 Rt.
- 127145 Pow. P. 34 Rt.
- 128166 Manhole 37 Rt.
- 128171 Fence 49 Rt.
- 129135 8" Gas Pump Island 57 Rt.
- 129120
- 129120 8" Gas Pump Island 57 Rt.
- 129192 8" Gas Pump Island 57 Rt.
- R/W Line 130+02.50
- 130116 9" R. Point (Back of Curb) 40.9 Rt.
- 130123 Pow. P. 36 Rt.
- Manhole 34 Rt.
- 130150 Manhole 17 Rt.
- 130154 Manhole 54 Rt.
- 130173 Water Valve 52.5 Rt.
- 8" H.P. Gas Line

| NO. | DATE | BY | REVISIONS |
|-----|------|----|-----------|
| | | | |
| | | | |

Project#: SA-204 (SP-1596)
 County: 057
 Route: 2-07
 Beg. Ref. Post:
 End Ref. Post:
 Sheet#: 11
 Sheet Type: 09



| FED. ROAD DIST. NO. | STATE | FED. AID PROJ. NO. | FISCAL YEAR | SHEET NO. | TOTAL SHEETS |
|---------------------|-------|--------------------|-------------|-----------|--------------|
| UT | UTAH | (SP1596) SR 204 | PGST WAR | 11 | |

STA. 143+00
 END OF PROJ. NO.
 SR 204 (SP1596)

NE 1/4 NW 1/4
 SEC. 29

145